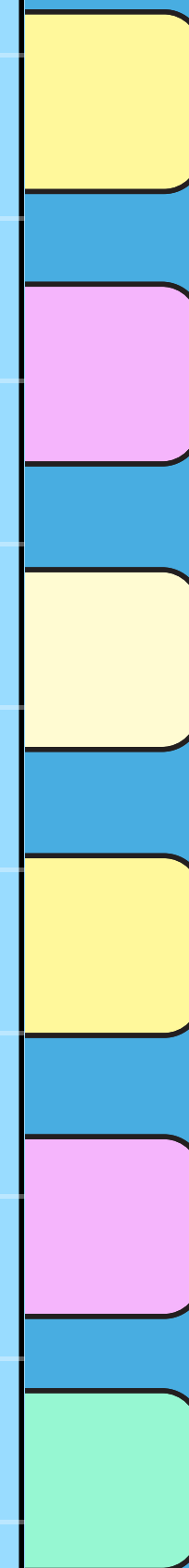
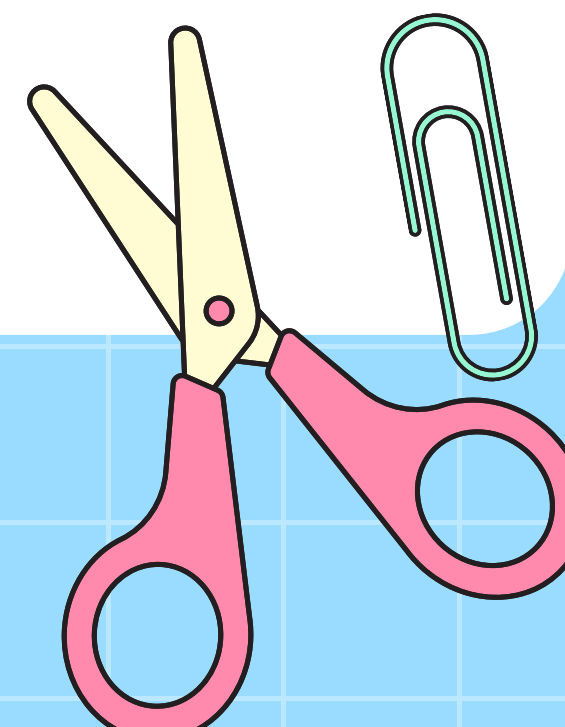
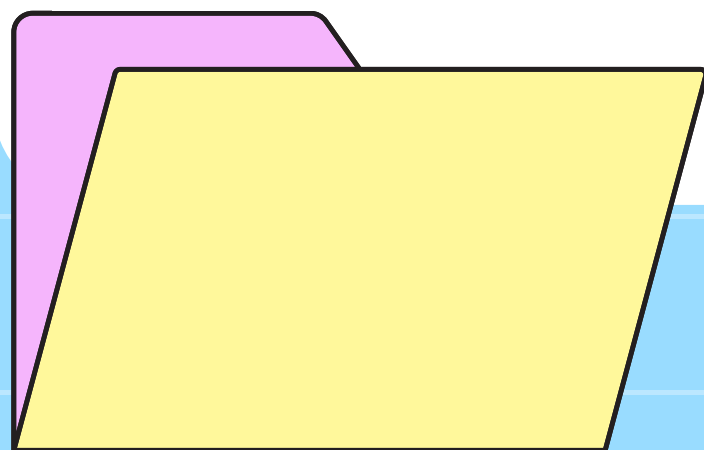


# Meet the Teacher

## 2025-2026

Year 4  
Class 3 and 4





# The Staff

Class 3: Mrs Taylor (Mon & Tues) and Mrs Chapman  
(Weds - Fri)

Class 4: Mr Gracie

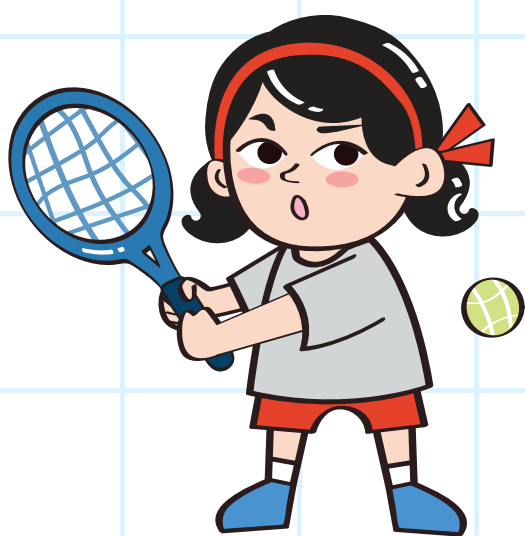
Other teachers: Miss Farr, Mrs Mason,

Teaching Assistants: Mrs Rootes, Mrs Kaminski,  
Mrs Buttle





Swimming will resume in the Summer term



PE is on a Tuesday and Wednesday. Children may now wear PE kit to school on these days.

# Timetable

A copy of our timetable can be found on the website. Although please bear in mind this changes frequently.



Music is on a Wednesday. This is taught by Mrs Mason.

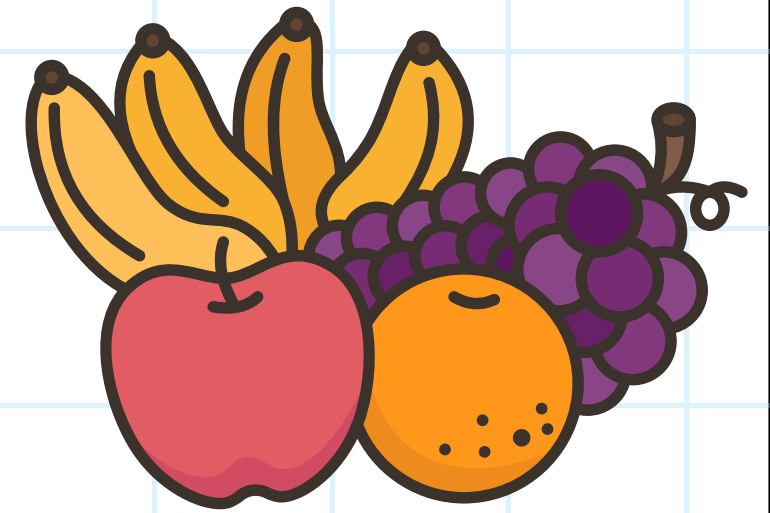


Forest School is on a Monday afternoon. Class 3 sessions will be in the Autumn 1 term. Class 4 sessions will be later on in the year.

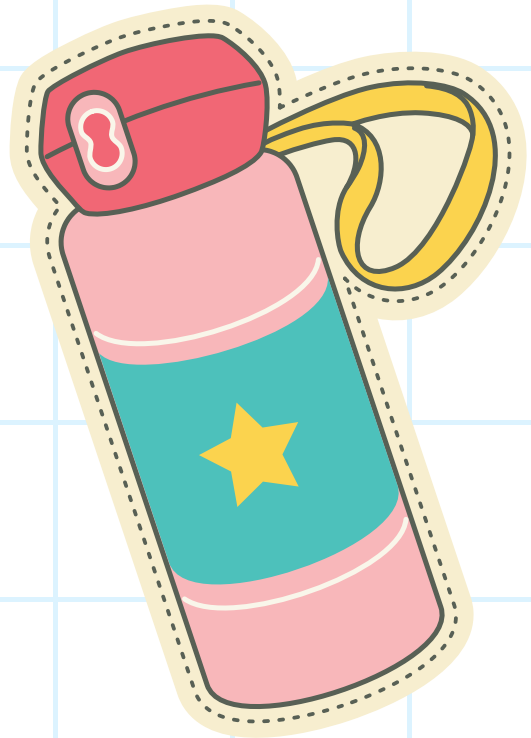


Emotional Literacy Days will now take place 6 times a year. One per half term.

# Food and Drink



If children want a snack at break time, this must be brought in from home. This must be a healthy snack so fruit or a cereal bar is acceptable. No nuts.



Children must have a water bottle in school everyday. One with a sports cap is ideal as they don't spill when knocked over.

A reminder that school meals must be booked in by the Saturday of the week before they are needed. Please ensure you also remember to cancel lunches if not needed.





# Uniform

Children are able to come into school in PE kit. PE uniform is a pale blue round-necked t-shirt, blue shorts and a navy tracksuit.

Please ensure all uniform is named!



# Home Learning

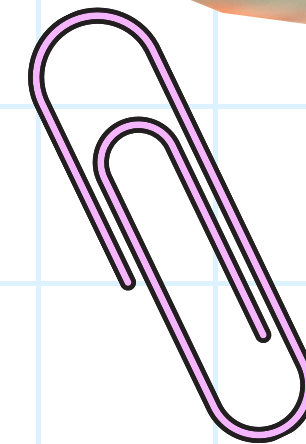
## **Reading:**

Children are expected to read to an adult at least three times a week. Year 4 children who are accessing our phonics programme will be sent home with a series of texts that relate to the phonics they have been learning that week. Children may read their coloured book band book, class library book or a book of their choosing. We are encouraging children to now record their own reading in their diaries.

Reading records will be checked during our 'Love of reading' session on a Friday. The books will be stamped.

**Maths:** Children will be expected to complete activities that are set on Mathletics each week. Regular TTRS engagement.

**Spelling:** Children will have access to Spelling Shed.





# Particular learning focuses for this year



**01**

## **Reading**

Children are still expected to read three times a week to an adult....

**02**

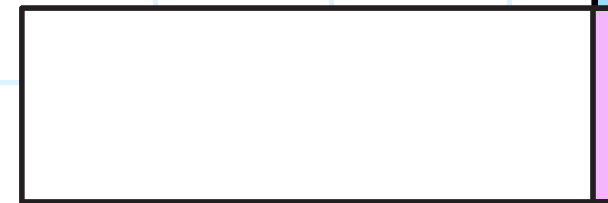
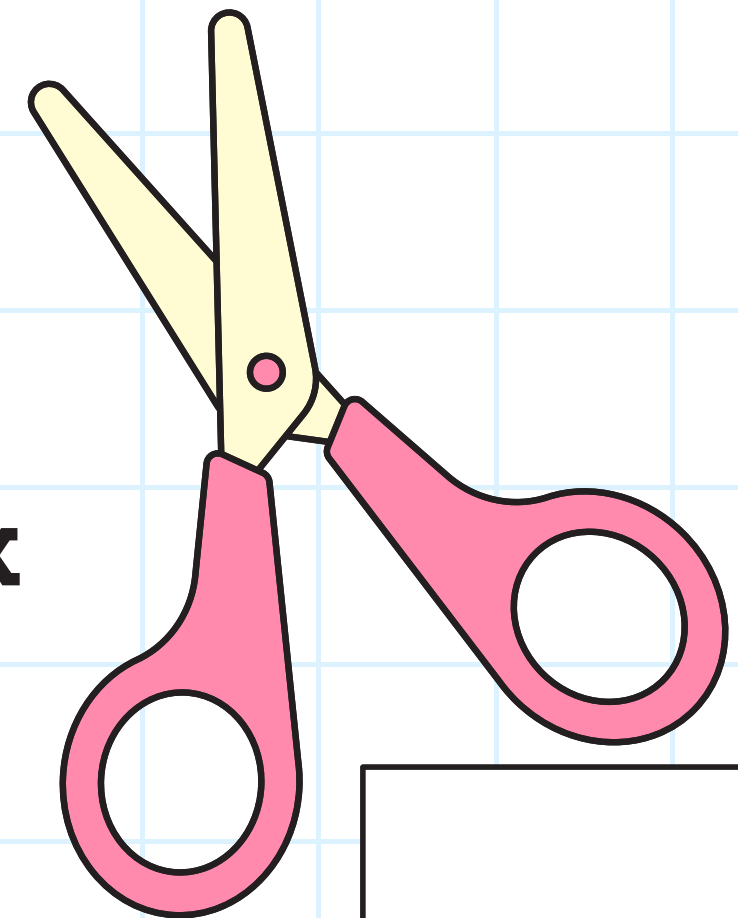
## **Multiplication Tables up to 12x**

Learn your tables... the multiplication check takes place in June 2026.

**03**

## **Subject Units**

Our curriculum has changed. Subject units are now studied for a half term. Geography units will be: Where does our food come from, Volcanoes, Rainforests. History units will be: How have children's lives changed, Anglo Saxons, Maya Civilisation.



# Trips and other events

Year 4 production dates:

- Thursday 27<sup>th</sup> November
- Friday 28<sup>th</sup> November

Trips:

- Stapleford Granary's concert hall for immersive musical experience - Monday 6<sup>th</sup> October
- Whole School Trip to the Panto - Thursday 11th December 2025.
- Trip to the zoo
- Residential in the Summer term
- Sutton Hoo - Anglo Saxon burial ground

Please check the virtual noticeboard for updates and other information.



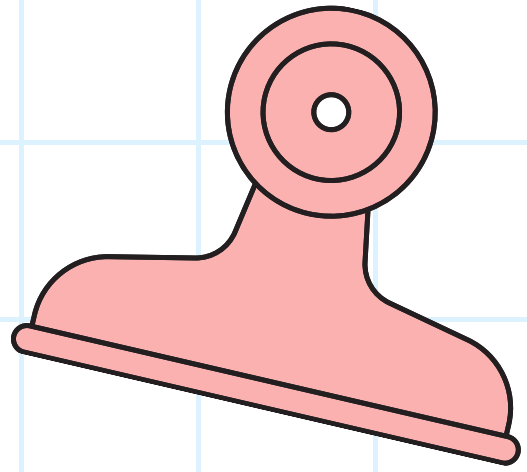


NEW!

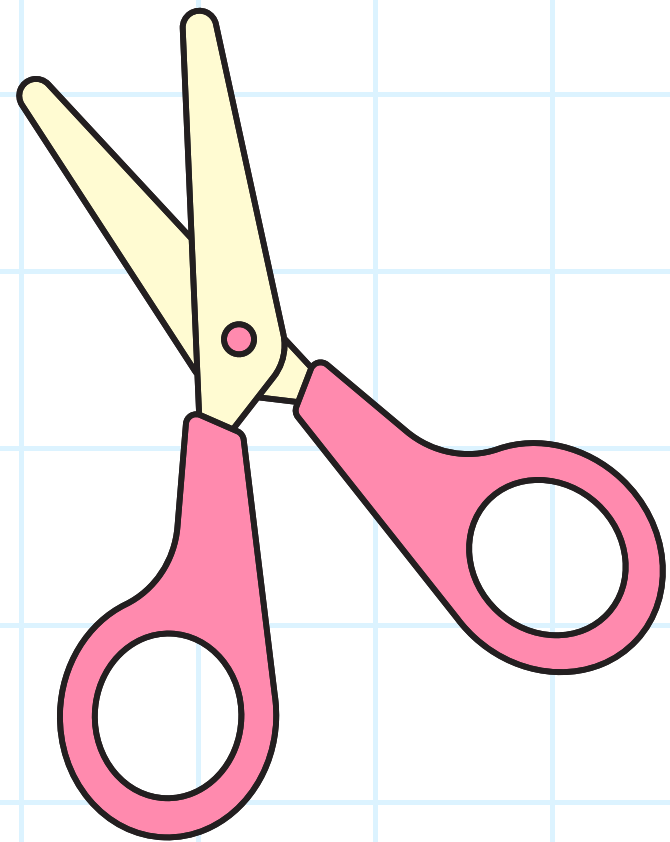
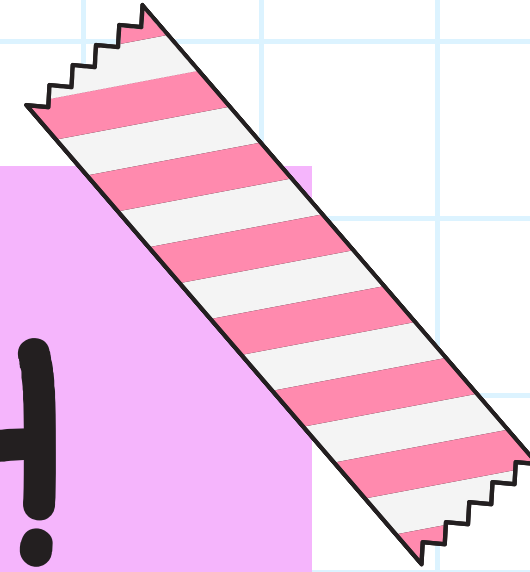
# Changes

NEW!

- Behaviour policy - Relationships policy
- Values
- Praise and rewards
- Ceilidh - celebration assembly
- House system



# Thank you!



If you have any questions we are happy to answer them now or afterwards individually.

If you need to contact us in the future then feel free to grab us on the playground after school or email [office@lintonheightsjunior.org](mailto:office@lintonheightsjunior.org)

